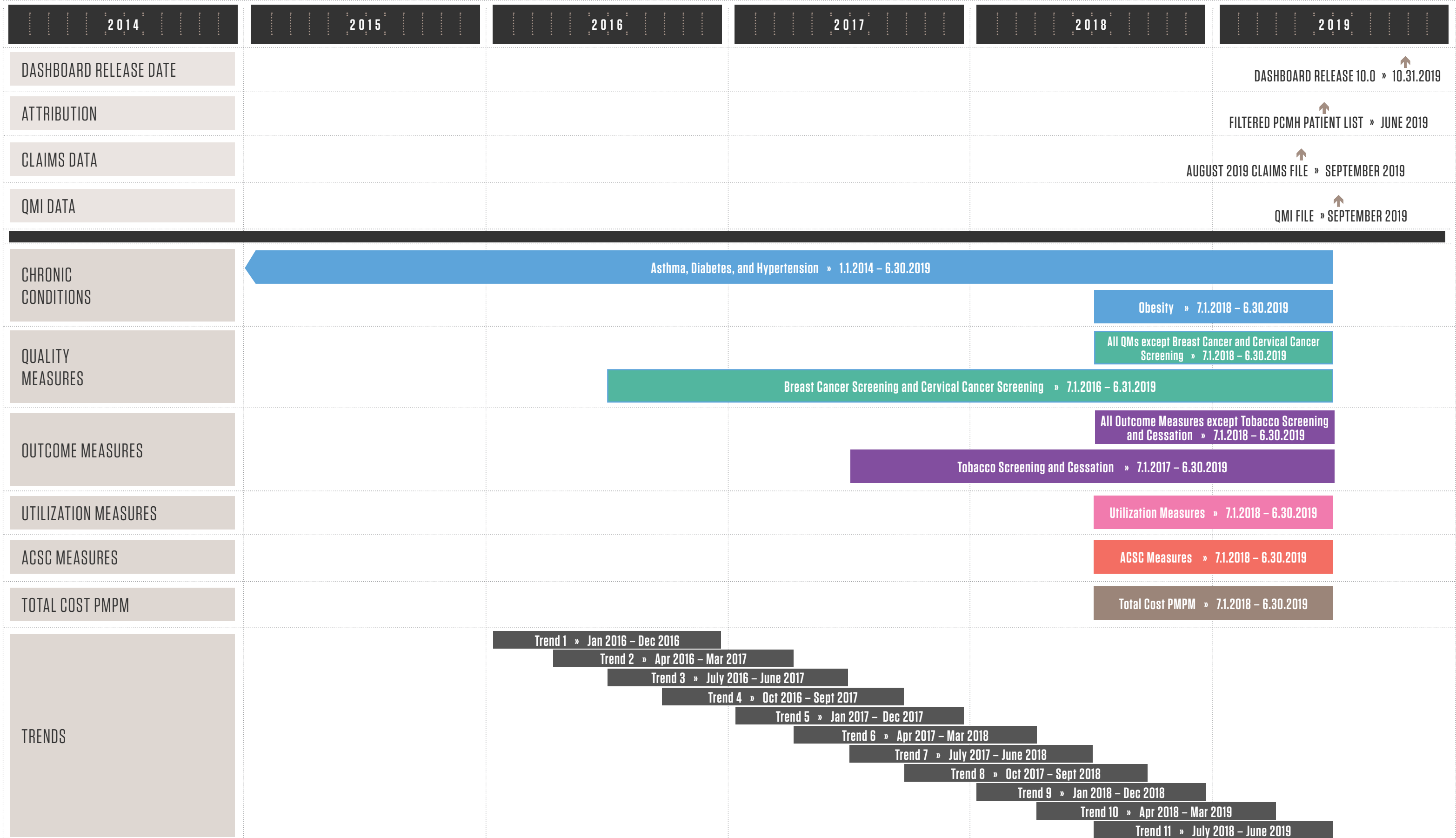


SIM CHIR Dashboard Timeline

The following timeline displays date-specific information about the data included in the SIM CHIR Dashboard.



Michigan Data Collaborative



Attribution and Data

For Dashboard Release 10.0, MDC used the following files:

- » Filtered June 2019 Patient List (received 6.21.2019)
- » August 2019 claims file (received 9.16.2019)
- » QMI file (final file received from MiHIN on 9.25.2019)

Chronic Conditions

Asthma, Diabetes, and Hypertension rates are calculated using all available data.

Obesity rates are calculated using data from the most recent measurement year and are broken out into the following categories:

- » Obesity: Any
- » Obesity: Moderate
- » Obesity: Overweight
- » Obesity: Severe

Quality Measures

Breast Cancer Screening rates and Cervical Cancer Screening rates are calculated using data from the measurement year plus two years prior to the measurement year.

The following quality measure rates are calculated using data from the current measurement year:

- » Adolescent Immunization
- » Adolescent Immunization:HPV
- » Adolescent Well-Care
- » Childhood Immunization Status
- » Chlamydia Screening
- » Diabetes: Eye Exam
- » Diabetes: HbA1c Testing
- » Diabetes: Nephropathy
- » Lead Screening - Children
- » Well-Child Visit: <15 Months
- » Well-Child Visit: 3-6 Years

Outcome Measures

The Tobacco Screening and Cessation rates are calculated using data from the measurement year plus one year prior to the measurement year.

The following outcome measures are calculated using data from the current measurement year.

- » Adult BMI
- » Controlling High Blood Pressure
- » Diabetes Blood Pressure Control
- » Diabetes HbA1c Poor Control
- » Screening for Depression and Follow Up
- » Weight Assessment and Counseling for Nutrition and Physical Activity for Children/Adolescents

Utilization Measures

The utilization measure rates are calculated using data from the current measurement year.

Included Measures:

- » Acute Hospital Admissions
- » All Cause Readmissions
- » Emergency Department Visits
- » Preventable ED Visits

ACSC Measures

The Ambulatory Care Sensitive Conditions (ACSC) measures are calculated using data from the current measurement year.

MDC includes the following ACSC composite measures, which are each comprised of a subset of ACSC measures.

- » Adult Overall Composite
- » Adult Acute Composite
- » Adult Chronic Composite
- » Adult Diabetes Composite
- » Pediatric Overall Composite
- » Pediatric Acute Composite
- » Pediatric Chronic Composite

For a list of the prevention quality indicators (PQIs) for each measure, see the [ACSC measure descriptions in the Technical Guide](#).

Total Cost PMPM

The Total Cost Per Member Per Month rates are based on medical and drug costs and are calculated using data from the current measurement year..

Trends

Displays the measure results for each reporting period, showing trending over time. Each trend includes a two month run-out period for claims..